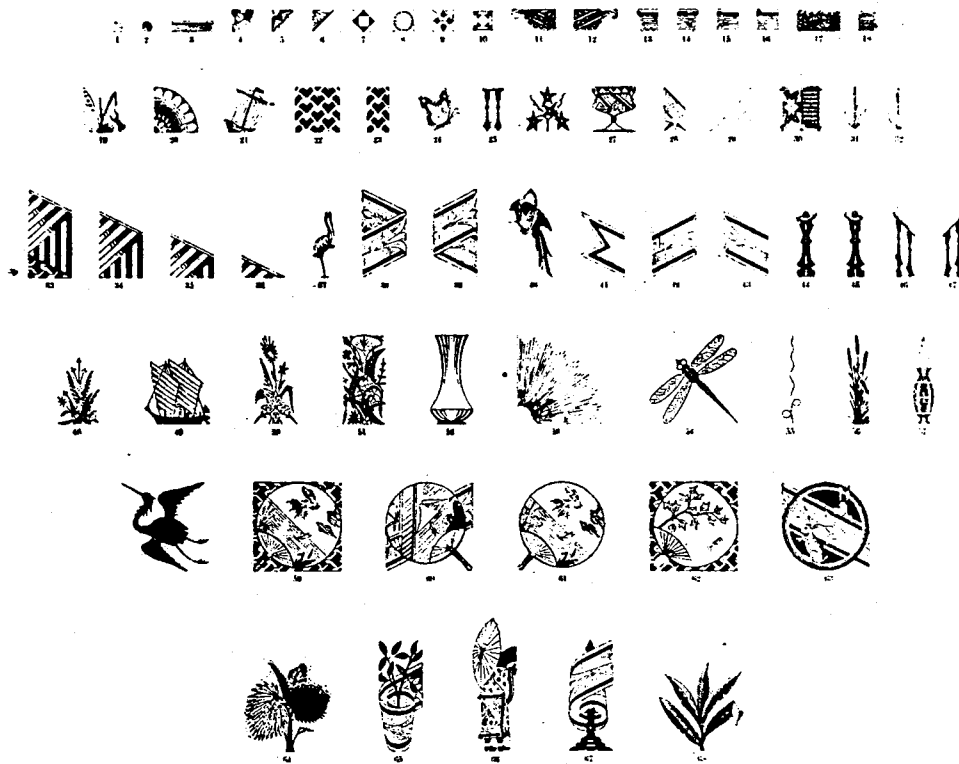


DESIGN.

W. W. JACKSON.
Font of Printing Types.

No. 11,440.

Patented Sept. 30, 1879.



Norman Britton
Law Money) WITNESSES.

Wm W Jackson

UNITED STATES PATENT OFFICE.

WILLIAM W. JACKSON, OF PHILADELPHIA, PENNSYLVANIA, ASSIGNOR TO
MACKELLAR, SMITHS & JORDAN, OF SAME PLACE.

DESIGN FOR A FONT OF PRINTING-TYPES.

Specification forming part of Design No. **11,440**, dated September 30, 1879; application filed September 3, 1879.
[Term of patent 14 years.]

To all whom it may concern:

Be it known that I, WILLIAM W. JACKSON, (assignor to MACKELLAR, SMITHS & JORDAN,) of the city and county of Philadelphia, Pennsylvania, have invented and produced a new and original Design for a Font of Printing-Types, of which the following is a specification.

The nature of my design is clearly shown in the accompanying typographic impression, to which reference is made.

It consists of a font of printing-types to be used in the formation of ornamental surroundings for printed matter.

I will now proceed to describe the various types of which the font is composed.

No. 1, a representation of a square body, the interior of which is shaded by a series of light parallel lines.

No. 2, a representation of a square body, the interior of which is shaded by a series of circles.

No. 3, a molding composed of a series of light horizontal lines surmounted by a heavy line and a lighter line with a space between them, the ends of these lines connected on the right by a short vertical line and upon the left by a curved line extending and forming a circle.

No. 4, a quarter of a circular ornament, the face of which is adorned by a series of curved parallel lines extending part of its face and terminating in the shaded portion, and also by the bud-like ornaments, shaded as shown.

No. 5, a flower-like ornament, triangular in shape, the base-line of which departs from a right line, forming the pointed figures, as shown, and the face of which is ornamented by the heavy-pointed figure, as shown, the space above it being shaded by a series of light lines.

No. 6, a triangular figure, the face of which is adorned by a series of honeysuckle-like ornaments, shaded as shown.

No. 7, a tile in the center of which is a square of light lines within a square of heavy lines placed transversely, the space between this square and the lines of the tile shaded, as shown.

No. 8, a tile within which is placed a circle, the face of which is shaded by a series of rays

extending from the center to the periphery, the space between the circle and the lines of the tile shaded, as shown.

No. 9, a shaded tile, in the center of which is placed a star-like figure formed of light lines. Between the points of the star-like figure and the lines of the tile are placed the heavy star-points, as shown.

No. 10, a tile within which is placed, about centrally, the shaded square figure. The spaces between the corners of the interior figure and the lines of the tile are filled by heavy dots connecting the two figures.

No. 11, a corner-piece composed of a molding and having the scroll-work upon the left. The face of the molding is adorned by the bud-like and honeysuckle-like ornaments, as shown, and shaded by heavy lines.

No. 12, the reverse of No. 11.

No. 13, a molding composed of a series of short horizontal light lines, followed by a heavy horizontal line, succeeded by a series of light horizontal lines, then heavy and light horizontal lines projecting a short distance beyond the lower horizontal lines upon the left.

No. 14, the reverse of No. 13.

No. 15, similar to Nos. 13 and 14, save that the heavy and light horizontal lines do not project beyond the lower horizontal lines.

No. 16, similar to No. 15, save that upon the left and above the heavy horizontal line the heavy shade occurs.

Nos. 17 and 18 are figures representing a large and a small body of sedge or grass.

Nos. 19, 26, 31, and 32 are representations of various forms of sedges or grasses.

No. 20, a quarter of a circular figure, the face of which is shaded by a series of curved lines. Above these are placed the bud-like ornaments, and below them the honeysuckle-like, followed by the bud-like, ornaments.

No. 21, a representation of a Japanese yacht.

Nos. 22 and 23. In No. 22, a series of heavy figures and parts of the same, formed of half-squares placed transversely, from the central point of each of which projects downward a light line placed within a square. No. 23 is a part or section of No. 22.

No. 24, a representation of a butterfly.

No. 25, a balustrade.
 No. 27, a representation of an ornamental vase adorned with the chasing, as shown.
 No. 28, a corner-piece ornamented upon its face by the honeysuckle and flower like ornaments, and shaded, as shown.
 No. 29, a section of folded drapery.
 No. 30, a representation of a Japanese cabinet ornamented on one side by a series of small heavy dots, and upon the other side by the flower and bud like ornaments.
 Nos. 33, 34, 35, and 36 are representations of sections of Japanese boxes formed of different-colored straws.
 No. 37, a representation of a stork or heron.
 Nos. 38, 39, 41, 42, and 43 are sections of border adorned upon their shaded faces with the heavy horizontal lines, between which occur the lily-like ornaments, save in the case of No. 41, in which the lines upon the left incline inward to a central point, where they meet, and the heavy lines follow the outer lines in this respect.
 Nos. 44 and 45 are newel-posts, to be used with the balustrades shown in Nos. 46 and 47.
 No. 40, a representation of a bird of the parrot species resting within a ring.
 Nos. 48, 50, and 56 are representations of groups of sedges or grasses of various forms.
 No. 49, a representation of a Japanese vessel or junk.
 No. 51, a group of flowers, leaves, and grasses.
 No. 52, a representation of a Japanese vase.
 No. 53, a fan-like figure composed of a series of light lines, some of which project at intervals above the rest, forming the points, as shown.
 No. 54, a representation of the insect commonly known as the "darning-needle."

No. 55, a looped cord.
 No. 57, an ornamented spear-head-like ornament.
 No. 58, a representation of a Japanese bird flying.
 Nos. 59 and 62 are corner-pieces. No. 59 contains a sea view, and No. 62 a land view, of the Japanese style.
 No. 60, a representation of a Japanese fan, combined with a section of the border shown in No. 42.
 No. 61, a representation of a Japanese fan.
 No. 63, a representation of a ring, combined with a section of the border shown in No. 42. The spaces above and below the border are shaded, and ornamented with the figures of the rabbits, as shown.
 No. 64, a representation of a branch of the palm-tree.
 No. 65, a representation of a Japanese flower-pot, combined with a section of the border shown in No. 42.
 No. 66, a figure of a Japanese holding an umbrella and a fan.
 No. 67, a pedestal or standard, from which the border described in No. 42 is shown as being unwound.
 No. 68, a branch of the fern-plant.
 Having now described my invention, what I claim as new is—
 The design for a font of printing-types, as shown and described.

WM. W. JACKSON.

In presence of—
 HERMAN METIUS,
 G. LANE MORLEY.