

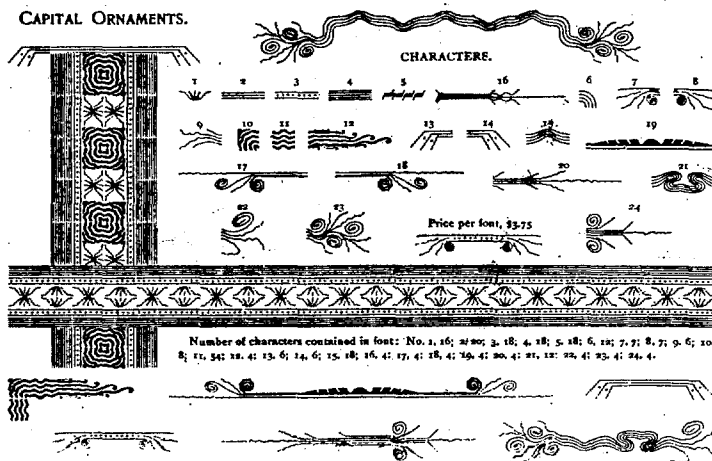
DESIGN.

C. E. HEYER.

FONT OF TYPE ORNAMENTS.

No. 20,851.

Patented June 23, 1891.



Witnesses
Jean Elliott
Julia Usher.

Inventor
Chas. E. Hoyer
By his Attorneys
Burton & Burton.

UNITED STATES PATENT OFFICE.

CHARLES E. HEYER, OF CHICAGO, ILLINOIS, ASSIGNOR TO BARNHART BROTHERS & SPINDLER, OF SAME PLACE.

DESIGN FOR A FONT OF TYPE ORNAMENTS.

SPECIFICATION forming part of Design No. 20,851, dated June 23, 1891.

Application filed April 14, 1891. Serial No. 388,947. Term of patent 14 years.

To all whom it may concern:

Be it known that I, CHARLES E. HEYER, a citizen of the United States, residing at Chicago, county of Cook, and State of Illinois, have invented and produced a new and original Design for a Font of Type Ornaments, set forth in the following specification, reference being had to the accompanying typographical impressions, forming a part thereof.

This design comprises pieces numbered from 1 to 24, inclusive, as shown in the accompanying typographic impressions, wherein each piece is denoted by its number. They are adapted to be grouped to form borders, columns, corners, captions, and other typographical embellishments in variety, as illustrated by the several combinations shown in the accompanying impressions.

No. 1 is a symmetrical arrangement of two tapering dashes flanked by two zigzag light lines and having a light line between them, all lines diverging, the character being adapted to be used singly or doubly.

No. 2 consists of three parallel lines.

No. 3 consists of two parallel lines flanking a line of dots.

No. 4 consists of five parallel lines.

No. 5 comprises four identical characters, consisting each of a short heavy dash with an oblique light spur in opposite directions from the opposite ends, said four characters being arranged end on end.

No. 6 consists of four light-line concentric quadrant arcs.

Nos. 7 and 8 are symmetrical, consisting each of a horizontal light-line spiral and broken wave lines diverging from between the two.

No. 9 consists of four irregular wave lines diverging irregularly from their initial points, which are in the same vertical plane.

No. 10 is a series of irregularly-concentric ragged heavy lines, duplicates of this number being adapted to be grouped symmetrically.

No. 11 is a series of irregularly-ragged heavy zigzag or wave lines substantially parallel.

No. 12 is a series of irregularly-heavy wave, zigzag, approximately-parallel horizontal lines of unequal length cut off square at one end and terminating at the other end in an incipient spiral ending in a dot, flanked at top and

bottom by light wave lines terminating similarly.

Nos. 13 and 14 are symmetrical series of light-line angles alternating with dots.

No. 15 is a series of approximately-parallel circumflex light lines.

No. 16 comprises a long tapering dart having a light spur at the heavy end, flanked by shorter light lines symmetrically disposed, terminating in wave ends diverging.

Nos. 17 and 18 are symmetrical, and consist each of a long medium-weight line slightly tapering and waved toward one end, having a parallel heavy line ending in a polygonal spiral turned away from the light line and a light-line oval spiral turned toward the light line, and a light irregularly-waved line springing from between the two spirals.

No. 19 is a brace comprising a medium-weight line and a heavy segment having its cord parallel therewith and indented on its curved side symmetrically on both sides of the middle of its length.

No. 20 is a symmetrical series of light lines parallel for a distance and then diverging from the middle one of the series and irregularly waving.

No. 21 is a group of light lines, the entire group being twice folded upon itself, making a conventional imitation of a bow-knot.

No. 22 is a series of light lines, the outer lines terminating in an oval spiral.

No. 23 is a series of light lines forming a conventional spray, several terminating in oval spirals.

No. 24 comprises a light middle line irregularly waved toward one end, flanked by light lines parallel thereto for about half its length, and terminating in a diverging spur, and outside of them symmetrically-disposed oval spirals and irregularly-diverging spurs.

I claim—

The design for a font of ornaments herein shown and described.

In testimony whereof I have hereunto set my hand, at Chicago, Illinois, in the presence of two witnesses, this 8th day of April, A. D. 1891.

CHAS. E. HEYER.

Witnesses:

JEAN ELLIOTT,

CELESTE P. CHAPMAN.